



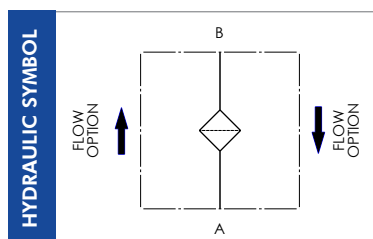
FLC SERIES

Pressure filters

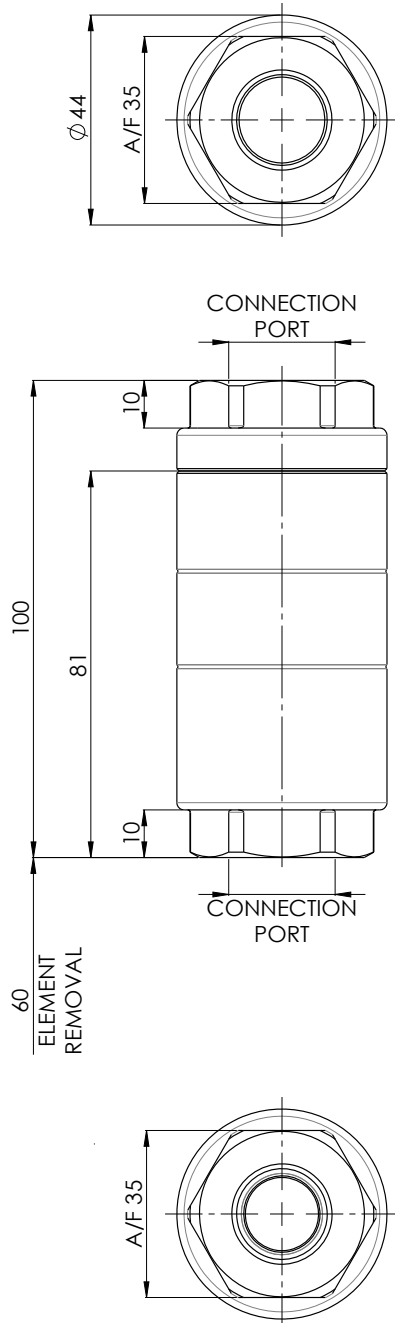
“Last Chance” type filters for protection of the tractor’s hydraulic system from the contaminant coming from the auxiliary devices.



HOUSING	tested according to NFPA T3.10.5.1, ISO 10771, ISO 3968	
PRESSURE:	max operating 350 bar	
CONNECTION PORTS:	G 1/4" - G 3/8" - G 1/2"	
MATERIALS:	Housing:	Anodized aluminium alloy
	Seals:	NBR
ELEMENT	tested according to ISO 11170, 2941, 2942, 2943, 3724, 3968	
FILTER MEDIA:	S25 - S40	
COLLAPSE PRESSURE:	80 bar	
TEMPERATURE RANGE:	-30 °C to +100 °C	
FLUID COMPATIBILITY:	Full with HH-HL-HM-HV HETG-HEES (acc. to ISO 6743/4). For use with other fluid please contact Filtrtec Customer Service (info@filtrtec.it).	



OVERALL DIMENSIONS



ORDERING INFORMATION

	1.	2.	3.	4.	5.
	FLC	1	S25	B	B3
SPARE ELEMENT	ELC	1	S25	B	

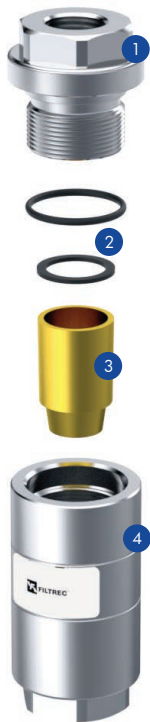
1. FILTER SERIES	FLC	
2. FILTER SIZE	1	
3. FILTER MEDIA	S25	syntered bronze 25 μ m
	S40	syntered bronze 40 μ m
4. SEALS	B	NBR
5. CONNECTION PORTS	B1	G 1/4"
	B2	G 3/8"
	B3	G 1/2"

WEIGHT: 0,3 Kg

FLOW RATE

MODEL	PRESSURE DROP			WEIGHT
	at 10 l/min	at 20 l/min	at 40 l/min	
FLC1S25BB3	1,0	2,0	4,0	0,3 Kg
FLC1S40BB3	0,9	1,8	3,6	

USER TIPS



- ① FILTER HEAD
- ② SEAL KIT
- ③ FILTER ELEMENT
- ④ FILTER BOWL

SPARE SEAL KIT PART NUMBER (2)

NBR

06.021.00280

TIGHTENING TORQUE

90 Nm

WARNING

- ⚠ Make sure that Personal Protective Equipment (PPE) is worn during installation and maintenance operation.

DISPOSAL OF FILTER ELEMENT

- ⚠ The used filter elements and the filter parts dirty of oil are classified as "Dangerous waste material": they must be disposed according to the local laws by authorized Companies.

INSTALLATION

- ⚠ 1. Verify that no tension is present on the filter after mounting.
- 2. Enough space must be available for filter element replacement.
- ⚠ 3. Never run the system with no filter element fitted.
- 4. Keep in stock a spare FILTREC filter element for timely replacement when required.
- 5. Filter housing should be earthed.

OPERATION

- ⚠ 1. The filter must work within the operating conditions of pressure, temperature and compatibility given in the first page of this data sheet.
- 2. Replace the element according to the system manufacturer's recommendations.

MAINTENANCE

- ⚠ 1. Make sure that the system is switched off and there is no residual pressure in the filter.
- 2. Unscrew the filter bowl (4) by turning it anti-clockwise and remove it.
- 3. Remove the dirty filter element (3).
- 4. Clean carefully the filter bowl (4); check the seals (2) conditions and replace if necessary.
- 5. Before fitting a new FILTREC element (3), verify the part number, particularly concerning the micron rating; then insert the element into the filter bowl (4).
- 6. Lubricate the filter bowl (4) thread and screw it by hand in the filter head (1) by turning it clockwise.
- 7. Screw in the bowl to stop.
- ⚠ 8. The used filter elements cannot be cleaned and re-used.

