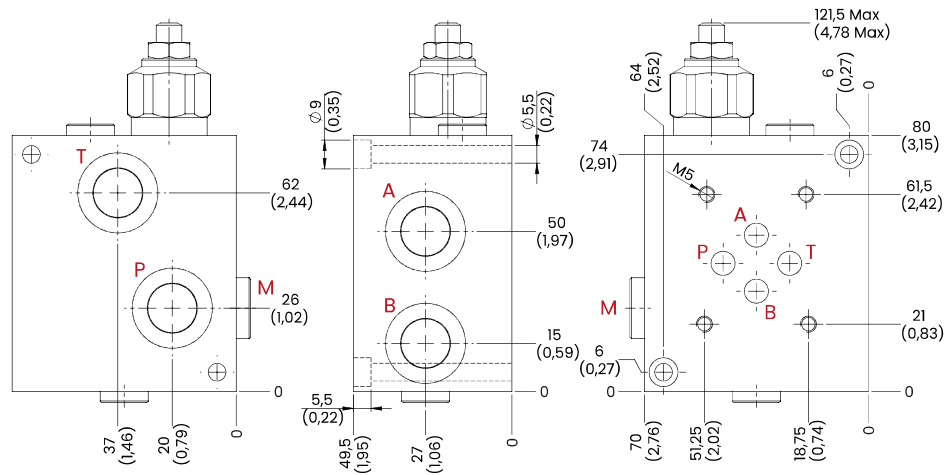


CETOP 3 SINGLE MANIFOLDS

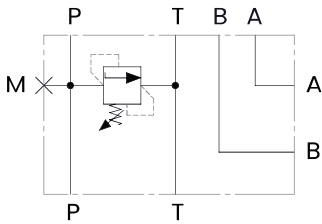


TECHNICAL CHARACTERISTICS

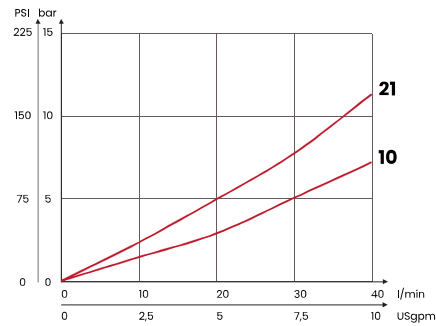
mm [Inches]

A-B-P-T	M
3/8 BSPP	1/4 BSPP
Aluminium body	

HYDRAULIC CIRCUIT



PERFORMANCE



ORDERING CODE

ORDERING CODE	RANGE SPRING	INCREASE TO TURN	MAX FLOW l/min USgpm	MAX PRESSURE bar PSI	WEIGHT kg lb
MC3C10	10/100 bar [145/1450 PSI]	12 bar/ al giro [174 PSI/turn]	40 [10,6]	210 [3045]	0,8 [1,76]
MC3C21	20/210 bar [290/3045 PSI]	33 bar/ al giro [479 PSI/turn]			
Available with handknob					

Mineral oil: DIN 51524 ISO 6743/4 | Oil viscosity: 15 to 250 cSt 15-250 mm²/s | Oil temperature: -4°F + 176°F -20°C +80°C | Ambient temperature: -4°F + 122°F -20°C +50°C | Max contamination index with filter: 5 to 250 cSt 15-250 mm²/s | It is necessary a filter use to protect the valve (advised filtration 15 µm) | Max leakage: 0,25 cm³/min - 5 drops/min at 80% of the calibration pressure