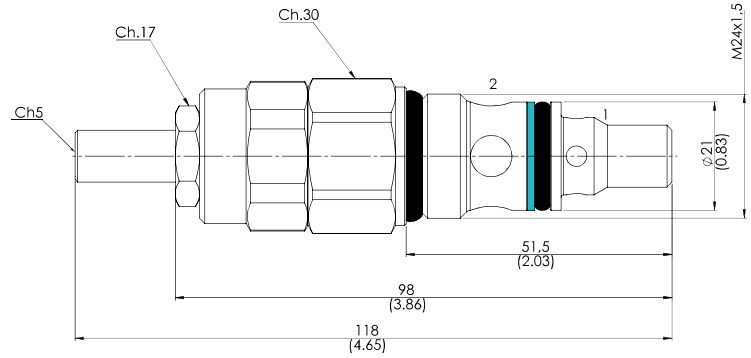


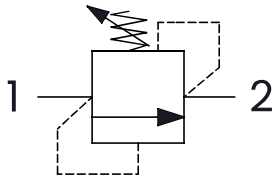
M80 M24 x 1,5

RELIEF VALVES 80 L

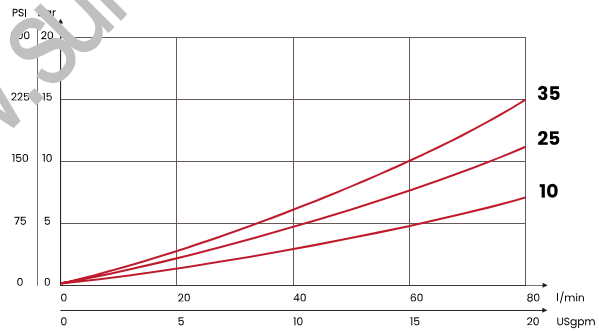


mm
[Inches]

HYDRAULIC CIRCUIT



PERFORMANCES



ORDERING CODE

ORDERING CODE	CAVITY	RAGE SPRING	INCREASE TO TURN	MAX FLOW l/min USgpm	MAX PRESSURE bar PSI	TIGHTENING TORQUE Nm lbt ft	WEIGHT kg lbt
M80C10	M24 x 1,5	10/100 bar [145/1450 PSI]	25 bar/al giro [362 PSI/turn]	80 [21,1]	350 [5075]	60 [44]	0,25 [0,55]
M80C25		20/250 bar [290/3625 PSI]	40 bar/al giro [580 PSI/turn]				
M80C35		50/350 bar [725/5075 PSI]	90 bar/al giro [1305 PSI/turn]				

Available with handknob

Mineral oil: DIN 51524 ISO 6743/4 | Oil viscosity: 15 to 250 cSt 15-250 mm²/s | Oil temperature: -4°F + 176°F -20°C +80°C | Ambient temperature: -4°F + 122°F -20°C +50°C | Max contamination index with filter: 5 to 250 cSt 15-250 mm²/s | It is necessary a filter use to protect the valve (advised filtration 15 µm) | Max leakage: 0,25 cm³/min - 5 drops/min at 80% of the calibration pressure