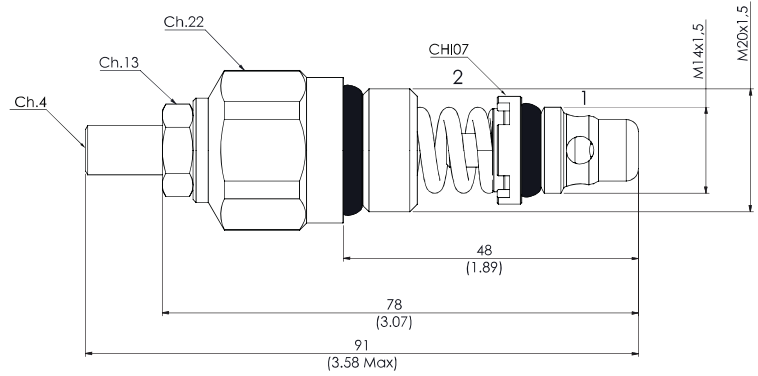


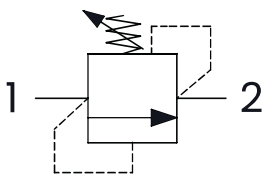
M40 M14 x 1,5

RELIEF VALVES 40 L

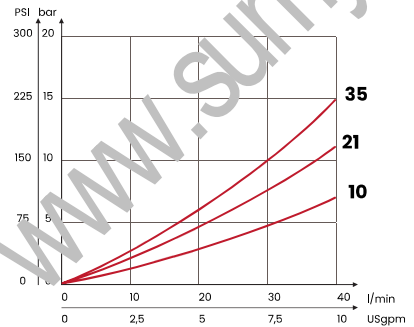


mm
[Inches]

HYDRAULIC CIRCUIT

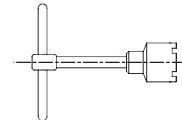


PERFORMANCES



OPTIONAL TOOL

TYPE
CHI07



ORDERING CODE

ORDERING CODE	CAVITY	RAGE SPRING	INCREASE TO TURN	MAX FLOW l/min USgpm	MAX PRESSURE bar PSI	M14X1,5 TIGHTENING TORQUE Nm lbt ft	M20X1,5 TIGHTENING TORQUE Nm lbt ft	WEIGHT kg lbt
M40C10	M14 x 1,5	10/100 bar [145/1450 PSI]	12 bar/al giro [174 PSI/turn]	40 [10,6]	350 [5075]	10 [7]	40 [30]	0,13 [0,29]
M40C21		20/210 bar [290/2045 PSI]	33 bar/al giro [479 PSI/turn]					
M40C35		70/350 bar [1015/5075 PSI]	70 bar/al giro [1015 PSI/turn]					

Available with handknob

Mineral oil: DIN 51524 ISO 6743/4 | Oil viscosity: 15 to 250 cSt 15-250 mm²/s | Oil temperature: -4°F + 176°F -20°C +80°C | Ambient temperature: -4°F + 122°F -20°C +50°C | Max contamination index with filter: 5 to 250 cSt 15-250 mm²/s | It is necessary a filter use to protect the valve (advised filtration 15 µm) | Max leakage: 0,25 cm³/min - 5 drops/min at 80% of the calibration pressure