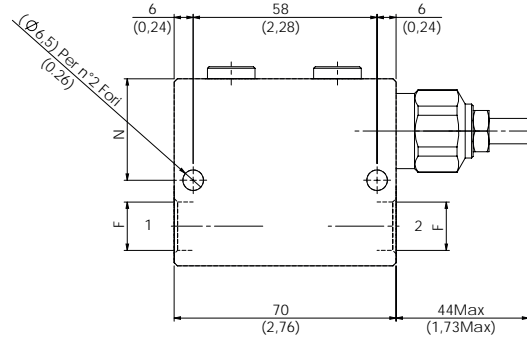
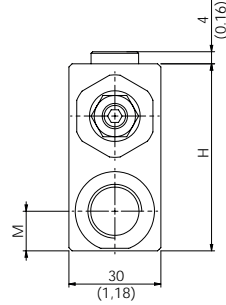


SEQUENCE VALVES



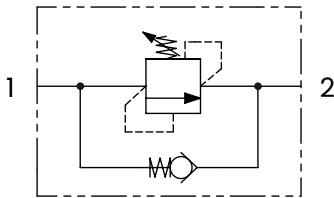
TECHNICAL CHARACTERISTICS

mm [Inches]

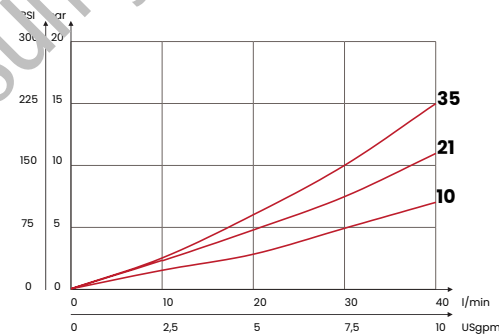
F	H	M	N
3/8 BSPP	60 [2,36]	13 [0,51]	33 [1,3]
1/2 BSPP	70 [2,76]	17 [0,67]	35 [1,38]

Steel body

HYDRAULIC CIRCUIT



PERFORMANCES



ORDERING CODE

ORDERING CODE	F	RANGE SPRING	INCREASE TO TURN	MAX FLOW l/min USgpm	MAX PRESSURE bar PSI	WEIGHT kg lbt		
VSD2BC10	3/8 BSPP	10/100 bar [145/1450 PSI]	12 bar/ al giro [174 PSI/turn]	40 [10,6]	350 [5075]	0,9 [1,98]		
VSD2BC21		20/210 bar [290/3045 PSI]	33 bar/ al giro [479 PSI/turn]					
VSD2BC35		70/350 bar [1015/5075 PSI]	70 bar/ al giro [1015 PSI/turn]					
VSD3BC10	1/2 BSPP	10/100 bar [145/1450 PSI]	12 bar/ al giro [174 PSI/turn]			40 [10,6]	350 [5075]	1 [2,21]
VSD3BC21		20/210 bar [290/3045 PSI]	33 bar/ al giro [479 PSI/turn]					
VSD3BC35		70/350 bar [1015/5075 PSI]	70 bar/ al giro [1015 PSI/turn]					

Available with handknob

Mineral oil: DIN 51524 ISO 6743/4 | Oil viscosity: 15 to 250 cSt 15-250 mm²/s | Oil temperature: -4°F + 176°F -20°C +80°C | Ambient temperature: -4°F + 122°F -20°C +50°C | Max contamination index with filter: 5 to 250 cSt 15-250 mm²/s | It is necessary a filter use to protect the valve (advised filtration 15 µm) | Max leakage: 0,25 cm³/min - 5 drops/min at 80% of the calibration pressure