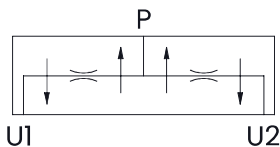
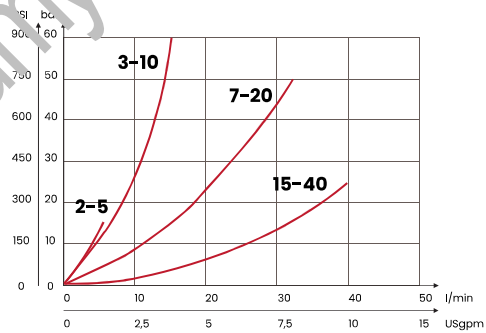


mm
[Inches]

HYDRAULIC CIRCUIT



PERFORMANCES



ORDERING CODE

ORDERING CODE	PORT P	PORT U1/U2	INLET FLOW RANGE l/min USgpm	MAX FLOW l/min USgpm	MAX PRESSURE bar PSI	WEIGHT kg lbt
VDF2B2B1	3/8 BSPP	3/8 BSPP	2-5 [0,5-1,3]	40 [10,6]	210 [3050]	0,5 [1,1]
VDF2B2B2			3-10 [0,8-2,6]			
VDF2B2B3			7-20 [1,8-5,2]			
VDF2B2B4			15-40 [3,9-10,4]			
VDF3B2B4	1/2 BSPP	1/2 BSPP	7-20 [1,8-5,2]	40 [10,6]	210 [3050]	0,5 [1,1]
VDF3B3B3			15-40 [3,9-10,4]			
VDF3B3B4						

Aluminium body

Mineral oil: DIN 51524 ISO 6743/4 | Oil viscosity: 15 to 250 cSt 15-250 mm²/s | Oil temperature: -4°F + 176°F -20°C +80°C | Ambient temperature: -4°F + 122°F -20°C +50°C | Max contamination index with filter: 5 to 250 cSt 15-250 mm²/s | It is necessary a filter use to protect the valve (advised filtration 15 µm)