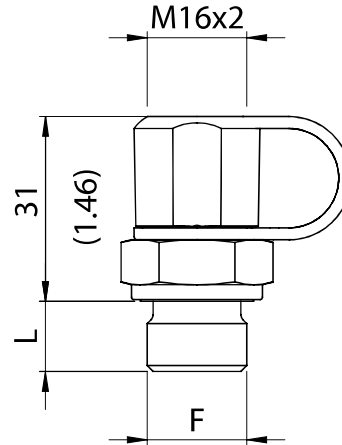


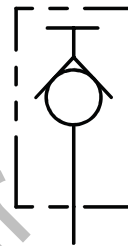
TEST COUPLINGS FOR PRESSURE GAUGE



TECHNICAL CHARACTERISTICS

F	Ch	L
1/8 BSPP	17	8 [0,31]
1/4 BSPP	19	12 [0,47]
3/8 BSPP	22	
1/2 BSPP	27	14 [0,55]

HYDRAULIC CIRCUIT



ORDERING CODE

ORDERING CODE	F	MAX PRESSURE bar PSI	TORQUE OF TIGHTENING Nm lbt ft	WEIGHT kg lbt
MPP0B	1/8 BSPP	400 [5800]	20 [14,6]	0,07 [0,16]
MPP1B	1/4 BSPP	630 [9140]	30 [22]	0,08 [0,18]
MPP2B	3/8 BSPP		60 [44]	0,10 [0,22]
MPP3B	1/2 BSPP		80 [58,6]	0,13 [0,29]

TAMPER PROOF CAP

USEFUL FOR M10 NUTS



ORDERING CODE

ORDERING CODE
62200021