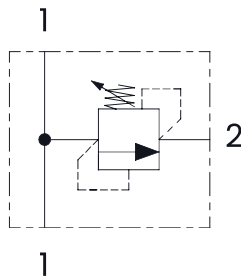
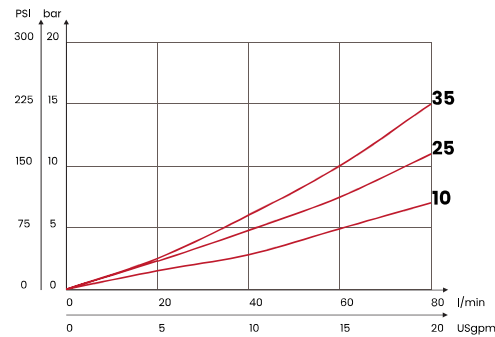


mm
[Inches]

HYDRAULIC CIRCUIT



PERFORMANCES



ORDERING CODE

ORDERING CODE	F	RANGE SPRING	INCREASE TO TURN	MAX FLOW l/min USgpm	MAX PRESSURE bar PSI	WEIGHT kg lbt
M804BC10	3/4 BSPP	10/100 bar [145/1450 PSI]	25 bar/ al giro [363 PSI/turn]	80 [21,1]	350 [5075]	0,66 [1,46]
M804BC25		20/250 bar [290/3625 PSI]	40 bar/ al giro [580 PSI/turn]			
M804BC35		50/350 bar [725/5075 PSI]	90 bar/ al giro [1305 PSI/turn]			
Available with handknob						
Steel body						

Mineral oil: DIN 51524 ISO 6743/4 | Oil viscosity: 15 to 250 cSt 15-250 mm²/s | Oil temperature: -4°F + 176°F -20°C +80°C | Ambient temperature: -4°F + 122°F -20°C +50°C | Max contamination index with filter: 5 to 250 cSt 15-250 mm²/s | It is necessary a filter use to protect the valve (advised filtration 15 µm) | Max leakage: 0,25 cm³/min - 5 drops/min at 80% of the calibration pressure