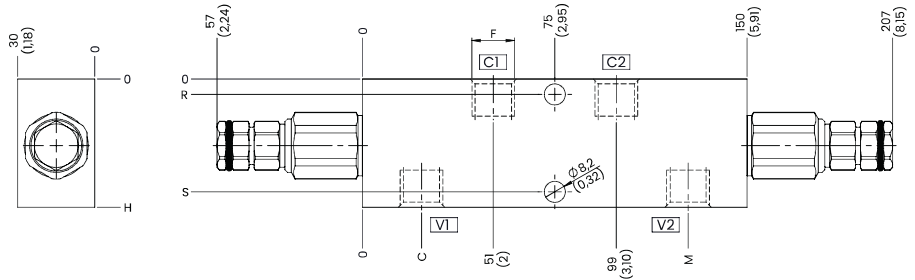


DOUBLE COUNTERBALANCE VALVES, FOR CLOSED CENTER

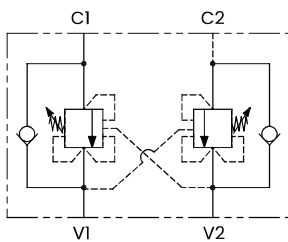


TECHNICAL CHARACTERISTICS

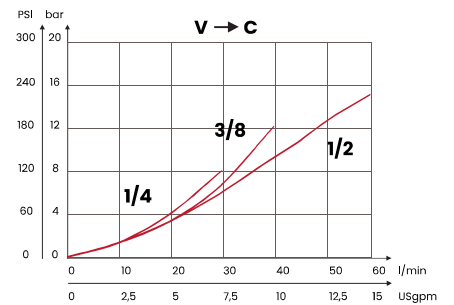
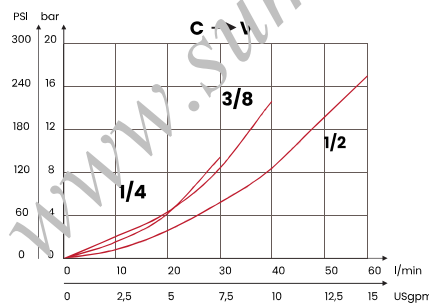
mm [Inches]

F	H	R	S	C	M
1/4 BSPP	50 [1,97]	6 [0,24]	44 [1,73]	23 [0,91]	127 [5]
3/8 BSPP					
1/2 BSPP	60 [2,36]	8,5 [0,33]	51,5 [2,03]	21 [0,83]	129 [5,08]
Steel body					

HYDRAULIC CIRCUIT



PERFORMANCES



ORDERING CODE

ORDERING CODE	F	MAX FLOW l/min USgpm	STANDARD SETTING	RANGE SPRING	INCREASE TO TURN	PILOT RATIO	MAX PRESSURE bar PSI	WEIGHT kg lbt				
BDC1B21	1/4 BSPP	30 [7,9]	210 bar [3045 PSI]	30/210 bar [435/3045 PSI]	80 bar/al giro [1160 PSI/turn]	Rp 1:4,25	350 [5075]	1,5 [3,3]				
BDC1B35			350 bar [5075 PSI]	60/350 bar [870/5075 PSI]	135 bar/al giro [1960 PSI/turn]							
BDC2B21	3/8 BSPP	40 [10,6]	210 bar [3045 PSI]	30/210 bar [435/3045 PSI]	80 bar/al giro [1160 PSI/turn]			Rp 1:4,25	350 [5075]	1,45 [3,2]		
BDC2B35			350 bar [5075 PSI]	60/350 bar [870/5075 PSI]	135 bar/al giro [1960 PSI/turn]							
BDC3B21	1/2 BSPP	60 [15,9]	210 bar [3045 PSI]	30/210 bar [435/3045 PSI]	80 bar/al giro [1160 PSI/turn]					Rp 1:4,25	350 [5075]	2 [4,4]
BDC3B35			350 bar [5075 PSI]	60/350 bar [870/5075 PSI]	135 bar/al giro [1960 PSI/turn]							

Valves are provided calibrated.
Calibration performed at the flow rate 5 l/m.

Mineral oil: DIN 51524 ISO 6743/4 | Oil viscosity: 15 to 250 cSt 15-250 mm²/s | Oil temperature: -4°F + 176°F -20°C +80°C | Ambient temperature: -4°F + 122°F -20°C +50°C | Max contamination index with filter: 5 to 250 cSt 15-250 mm²/s | It is necessary a filter use to protect the valve (advised filtration 15 µm) | Max leakage: 0,25 cm³/min - 5 drops/min at 80% of the calibration pressure