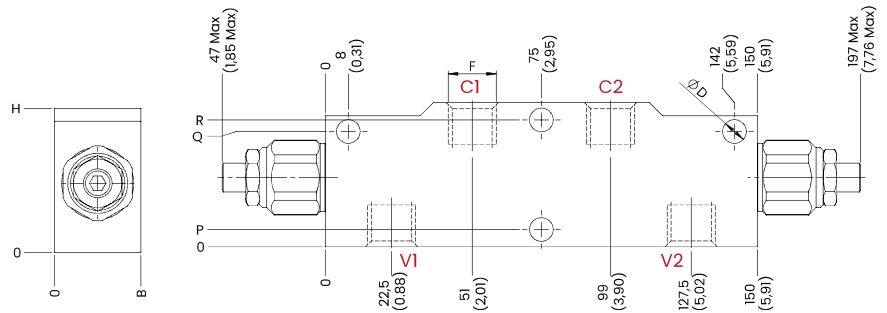


### DOUBLE COUNTERBALANCE VALVES, FOR OPEN CENTER

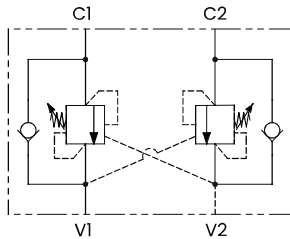


### TECHNICAL CHARACTERISTICS

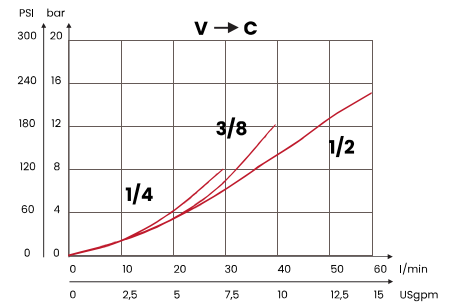
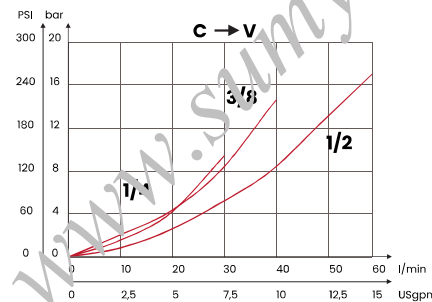
mm [Inches]

F	B	H	P	Q	R
1/4 BSPP	25 [0,98]	50 [1,97]	5,5 [0,22]	40,5 [1,59]	44,5 [1,75]
3/8 BSPP					
1/2 BSPP	30 [1,18]	60 [2,36]	8,5 [0,33]	46,5 [1,83]	51,5 [1,03]
Steel body					

### HYDRAULIC CIRCUIT



### PERFORMANCES



### ORDERING CODE

ORDERING CODE	F	MAX FLOW l/min USgpm	STANDARD SETTING	RANGE SPRING	INCREASE TO TURN	PILOT RATIO	MAX PRESSURE bar PSI	WEIGHT kg lbt				
<b>BDA1B21YA</b>	1/4 BSPP	30 [7,9]	210 bar [3045 PSI]	30/210 bar [435/3045 PSI]	80 bar/al giro [1160 PSI/turn]	Rp 1:4,25	350 [5075]	1,4 [3,09]				
<b>BDA1B35YA</b>			350 bar [5075 PSI]	60/350 bar [870/5075 PSI]	135 bar/al giro [1960 PSI/turn]							
<b>BDA2B21YA</b>	3/8 BSPP	40 [10,6]	210 bar [3045 PSI]	30/210 bar [435/3045 PSI]	80 bar/al giro [1160 PSI/turn]			Rp 1:4,25	350 [5075]	1,34 [2,95]		
<b>BDA2B35YA</b>			350 bar [5075 PSI]	60/350 bar [870/5075 PSI]	135 bar/al giro [1960 PSI/turn]							
<b>BDA3B21YA</b>	1/2 BSPP	60 [15,9]	210 bar [3045 PSI]	30/210 bar [435/3045 PSI]	80 bar/al giro [1160 PSI/turn]					Rp 1:4,25	350 [5075]	1,84 [4,06]
<b>BDA3B35YA</b>			350 bar [5075 PSI]	60/350 bar [870/5075 PSI]	135 bar/al giro [1960 PSI/turn]							

Valves are provided calibrated.  
Calibration performed at the flow rate 5 l/m.

Safety cap available on request cod. 62200021

Mineral oil: DIN 51524 ISO 6743/4 | Oil viscosity: 15 to 250 cSt 15-250 mm<sup>2</sup>/s | Oil temperature: -4°F + 176°F -20°C +80°C | Ambient temperature: -4°F + 122°F -20°C +50°C | Max contamination index with filter: 5 to 250 cSt 15-250 mm<sup>2</sup>/s | It is necessary a filter use to protect the valve (advised filtration 15 µm) | Max leakage: 0,25 cm<sup>3</sup>/min - 5 drops/min at 80% of the calibration pressure