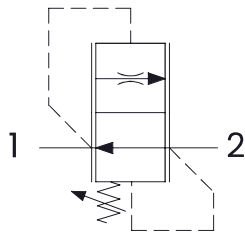
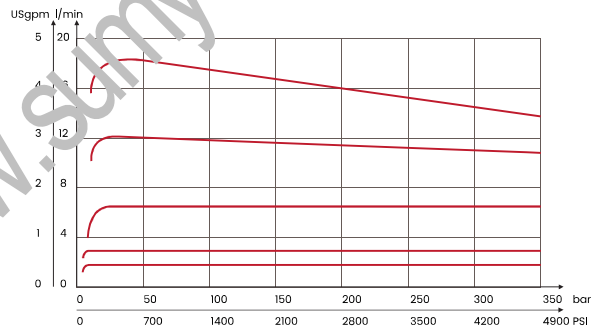


mm
[inches]

HYDRAULIC CIRCUIT



PERFORMANCES



ORDERING CODE

ORDERING CODE	CAVITY	MAX FLOW CONTROLLED FLOW AT 100 bar ± 10% l/min USgpm	Ø H	MAX PRESSURE bar PSI	TIGHTENING TORQUE Nm lbt ft	WEIGHT kg lbt
DR2C1	SAE8/2	0,6-2,2 l/min [0,16-0,58 USgpm]	0,9 [0,03]	350 [5075]	25/30 [19/22]	0,12 [0,26]
DR2C2		0,8-3 l/min [0,21-0,79 USgpm]	1 [0,04]			
DR2C3		1,3-5,1 l/min [0,34-1,35 USgpm]	1,3 [0,05]			
DR2C4		1,9-6,8 l/min [0,5-1,8 USgpm]	1,5 [0,06]			
DR2C5		2,6-9,1 l/min [0,69-2,4 USgpm]	1,7 [0,07]			
DR2C6		4-14,4 l/min [1,06-3,08 USgpm]	2,2 [0,09]			
DR2C7		7,2-18 l/min [1,9-4,75 USgpm]	2,8 [0,11]			

Mineral oil: DIN 51524 ISO 6743/4 | Oil viscosity: 15 to 250 cSt 15-250 mm²/s | Oil temperature: -4°F + 176°F -20°C +80°C | Ambient temperature: -4°F + 122°F -20°C +50°C | Max contamination index with filter: 5 to 250 cSt 15-250 mm²/s | It is necessary a filter use to protect the valve (advised filtration 15 µm)