

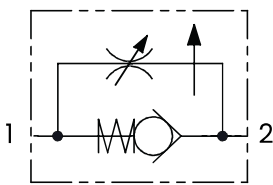
mm  
[Inches]

## TECHNICAL CHARACTERISTICS

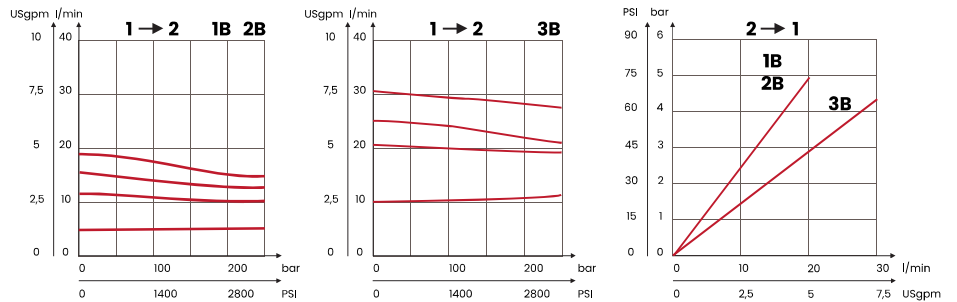
mm [Inches]

F	L	H	E
1/4 BSPP	87,5 [3,44]	66 [2,60]	36,5 [1,44]
3/8 BSPP			
1/2 BSPP	109 [4,31]	73 [2,87]	46 [1,81]
Steel body			

## HYDRAULIC CIRCUIT



## PERFORMANCES



## ORDERING CODE

ORDERING CODE	F	MAX FLOW l/min USgpm	MAX PRESSURE bar PSI	WEIGHT kg lbt
<b>CFR1B</b>	1/4 BSPP	10 [2,6]	250 [3625]	0,5 [1,10]
<b>CFR2B</b>	3/8 BSPP	18 [4,8]		
<b>CFR3B</b>	1/2 BSPP	33 [8,7]		0,8 [1,76]

Mineral oil: DIN 51524 ISO 6743/4 | Oil viscosity: 15 to 250 cSt 15-250 mm<sup>2</sup>/s | Oil temperature: -4°F + 176°F -20°C +80°C | Ambient temperature: -4°F + 122°F -20°C +50°C | Max contamination index with filter: 5 to 250 cSt 15-250 mm<sup>2</sup>/s | It is necessary a filter use to protect the valve (advised filtration 15 µm)