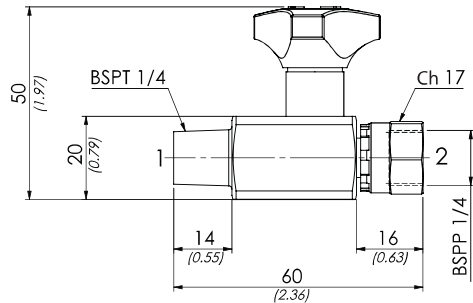


ORDERING CODE

RLM



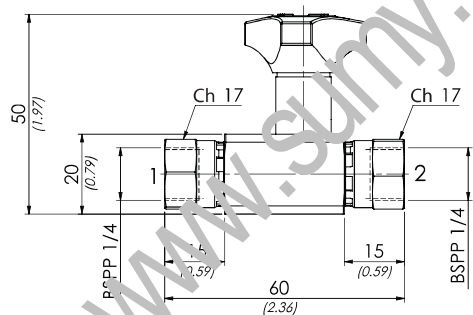
mm
[Inches]

TECHNICAL CHARACTERISTICS

MAX PRESSURE bar PSI	WEIGHT kg lbt
400 [5800]	0,15 [0,33]

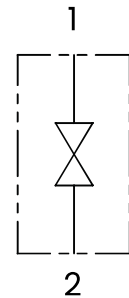
ORDERING CODE

RLC



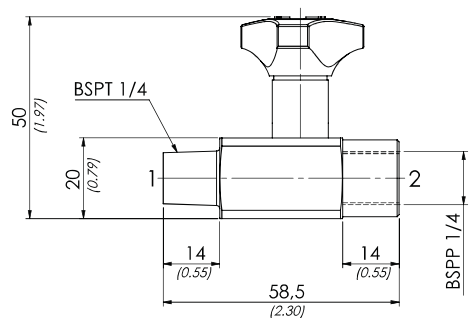
mm
[Inches]

HYDRAULIC CIRCUIT



ORDERING CODE

RLF



mm
[Inches]

Mineral oil: DIN 51524 ISO 6743/4 | Oil viscosity: 15 to 250 cSt 15-250 mm²/s | Oil temperature: -4°F + 176°F -20°C +80°C | Ambient temperature: -4°F + 122°F -20°C +50°C | Max contamination index with filter: 5 to 250 cSt 15-250 mm²/s | It is necessary a filter use to protect the valve (advised filtration 15 µm)