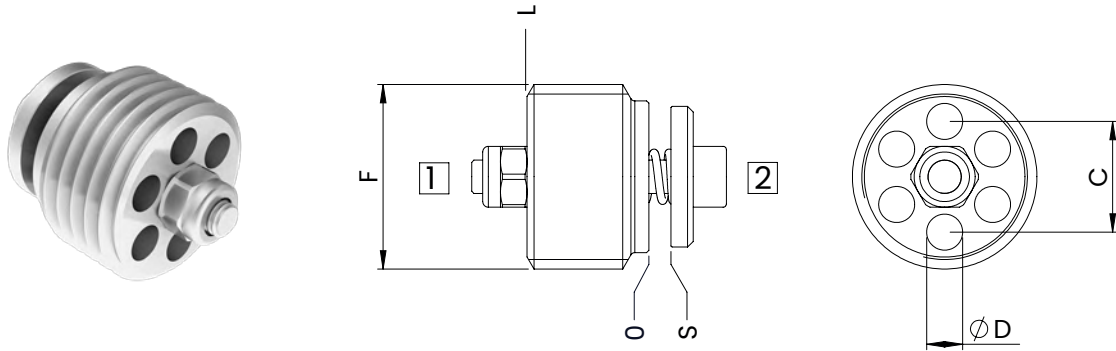


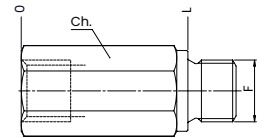
HOSE BURST VALVES



TECHNICAL CHARACTERISTICS

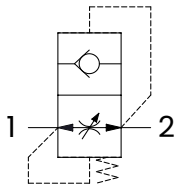
F	C	D	L
1/4 BSPP	8 [0,31]	2,5 [0,10]	8,2 [0,32]
3/8 BSPP	10 [0,39]	3,25 [0,13]	11 [0,43]
1/2 BSPP	11,5 [0,45]	4 [0,16]	13 [0,51]
3/4 BSPP	14,5 [0,57]	5,2 [0,20]	18 [0,70]

HOUSING

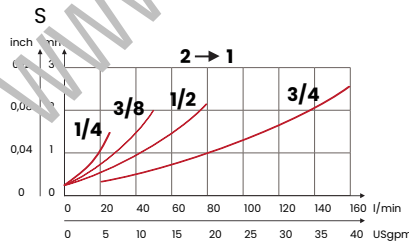


ORDERING CODE	F	L	Ch.
33300018	1/4 BSPP	39 [1,53]	19 [0,75]
33300019	3/8 BSPP	45 [1,77]	22 [0,87]

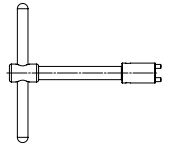
HYDRAULIC CIRCUIT



PERFORMANCES



TOOL



ORDERING CODE	TYPE	WEIGHT kg lbt
CHI01	VBA1B	0,12 [0,27]
CHI02	VBA2B	0,13 [0,29]
CHI03	VBA3B	0,15 [0,33]
CHI04	VBA4B	0,20 [0,44]

ORDERING CODE

ORDERING CODE	F	MAX FLOW l/min USgpm	MAX PRESSURE bar PSI	VALVE TIGHTENING TORQUE Nm lbt ft	NUT TIGHTENING TORQUE FOR ADJUSTMENT Nm lbt ft	WEIGHT kg lbt
VBA1B	1/4 BSPP	25 [6,6]	350 [5075]	4 [3]	1 [0,7]	0,008 [0,017]
VBA2B	3/8 BSPP	50 [13,2]		6 [4,5]		0,014 [0,030]
VBA3B	1/2 BSPP	80 [21,1]		10 [7,5]	2 [1,5]	0,025 [0,055]
VBA4B	3/4 BSPP	150 [39,6]		15 [11]		0,05 [0,11]

Adjustment and hole on the plate on request

Mineral oil: DIN 51524 ISO 6743/4 | Oil viscosity: 15 to 250 cSt 15-250 mm²/s | Oil temperature: -4°F + 176°F -20°C +80°C | Ambient temperature: -4°F + 122°F -20°C +50°C | Max contamination index with filter: 5 to 250 cSt 15-250 mm²/s | It is necessary a filter use to protect the valve (advised filtration 15 µm) | Max leakage in the version without hole: 0,25 cm³/min - 5 drops/min