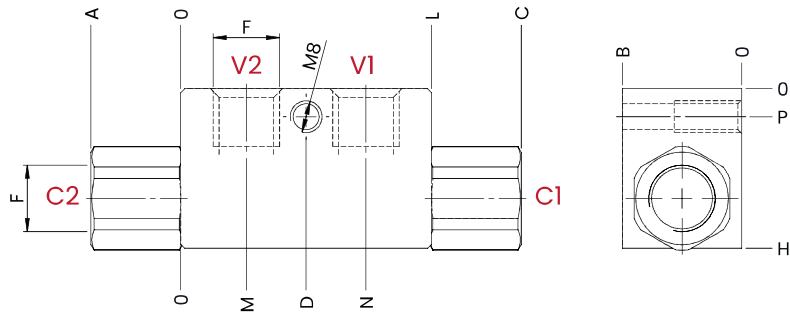


DOUBLE ACTING PILOT CHECK VALVES



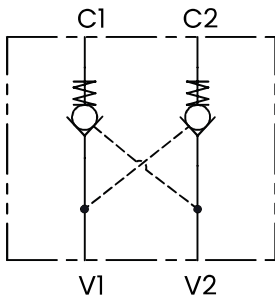
TECHNICAL CHARACTERISTICS

mm [Inches]

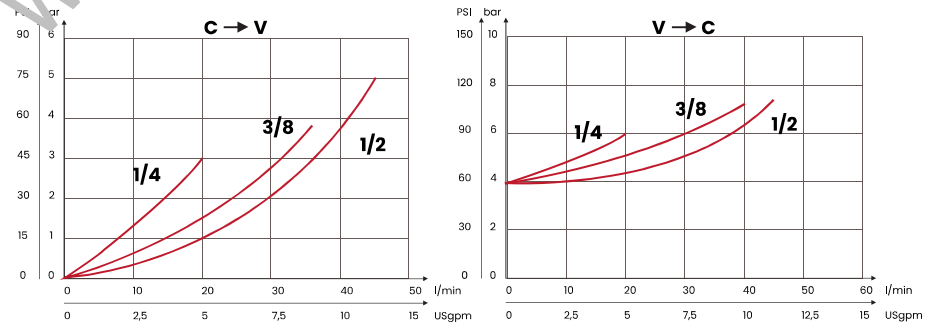
F	B	H	L	M	N	P	A	C	D
1/4 BSPP	30 [1,18]	40 [1,57]	63 [2,5]	16,5 [0,65]	46,5 [1,83]	7 [0,28]	22,5 [0,65]	85,5 [3,4]	31,5 [0,24]
3/8 BSPP									
1/2 BSPP	35 [1,38]	50 [2,0]	82 [3,23]	23 [0,90]	56 [2,21]	15 [0,59]	31,5 [1,24]	113,5 [4,5]	41 [1,61]

Steel body

HYDRAULIC CIRCUIT



PERFORMANCE CHARTS



ORDERING CODE

ORDERING CODE	F	MAX FLOW l/min USgpm	MAX PRESSURE bar PSI	PILOT RATIO	WEIGHT kg lbt
VBD1B	1/4 BSPP	20 [5,3]	350 [5075]	1:5,5	0,63 [1,39]
VBD2B	3/8 BSPP	35 [9,2]			0,6 [1,32]
VBD3B	1/2 BSPP	45 [11,9]		1:5	1,1 [2,43]

Mineral oil: DIN 51524 ISO 6743/4 | Oil viscosity: 15 to 250 cSt 15-250 mm²/s | Oil temperature: -4°F + 176°F -20°C + 80°C | Ambient temperature: -4°F + 122°F -20°C + 50°C | Max contamination index with filter: 5 to 250 cSt 15-250 mm²/s | It is necessary a filter use to protect the valve (advised filtration 15 µm) | Max leakage: 0,25 cm³/min - 5 drops/min