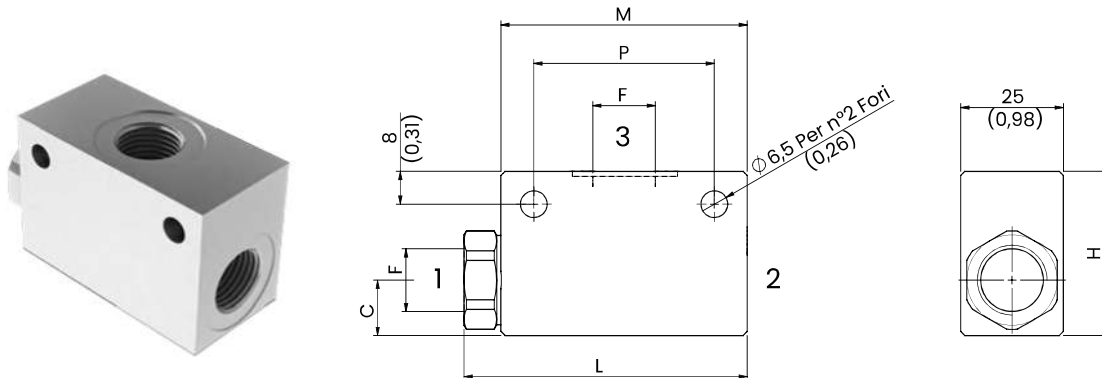


SHUTTLE VALVES

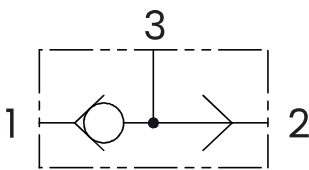


TECHNICAL CHARACTERISTICS

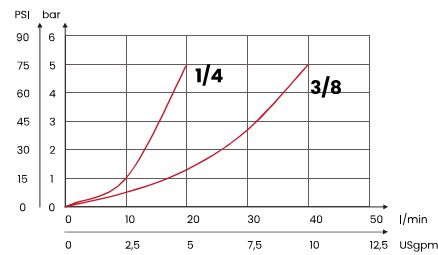
mm [inches]

F	L	H		M	P
1/4 BSPP	57 [2,24]	35 [1,38]		52 [2,05]	34 [1,34]
3/8 BSPP	69 [2,72]	40 [1,57]		60 [2,36]	44 [1,73]
Steel body					

HYDRAULIC CIRCUIT



PERFORMANCES



ORDERING CODE

ORDERING CODE	F	MAX FLOW l/min USgpm	MAX PRESSURE bar PSI	WEIGHT kg lbt
VSS1B	1/4 BSPP	20 [5,3]	350 [5075]	0,29 [0,65]
VSS2B	3/8 BSPP	40 [10,6]		0,37 [0,81]

Mineral oil: DIN 51524 ISO 6743/4 | Oil viscosity: 15 to 250 cSt 15-250 mm²/s | Oil temperature: -4°F + 176°F -20°C +80°C | Ambient temperature: -4°F + 122°F -20°C +50°C | Max contamination index with filter: 5 to 250 cSt 15-250 mm²/s | It is necessary a filter use to protect the valve (advised filtration 15 µm)