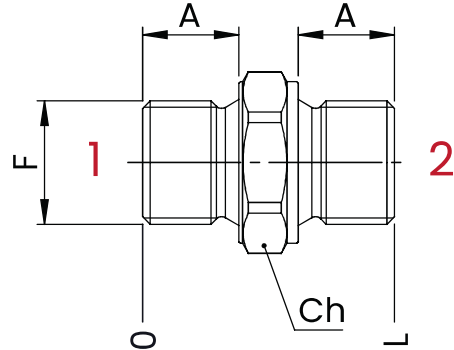


POPPET CHECK VALVES



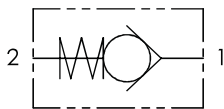
TECHNICAL CHARACTERISTICS

mm [Inches]

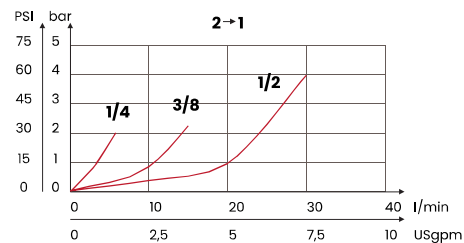
F	L	A	Ch.
1/4 BSPP	29 [1,14]	11 [0,43]	19
3/8 BSPP	34 [1,34]	13 [0,51]	22
1/2 BSPP	44 [1,73]	14 [0,55]	27

Calibration hole on request

HYDRAULIC CIRCUIT



PERFORMANCES



ORDERING CODE

ORDERING CODE	F	SPRING	MAX FLOW l/min USgpm	MAX PRESSURE bar PSI	TIGHTENING TORQUE Nm lbt ft	MAX TIGHTENING TORQUE FOR HOSE Nm lbt ft	WEIGHT kg lbt
UMC1B05	1/4 BSPP	0,5 bar Standard [7,3 PSI]	5 [1,3]	500 [7250]	30 [22,2]	20 [14,75]	0,03 [0,07]
UMC2B05	3/8 BSPP		15 [4]		45 [33,2]	35 [25,8]	0,05 [0,1]
UMC3B05	1/2 BSPP		30 [7,9]		60 [44,3]	50 [36,8]	0,11 [0,24]

Available with spring 3 bar, 4,5 bar, 6 bar

Mineral oil: DIN 51524 ISO 6743/4 | Oil viscosity: 15 to 250 cSt 15-250 mm²/s | Oil temperature: -4°F + 176°F -20°C +80°C | Ambient temperature: -4°F + 122°F -20°C +50°C | Max contamination index with filter: 5 to 250 cSt 15-250 mm²/s | It is necessary a filter use to protect the valve (advised filtration 15 µm) | Max leakage: 0,25 cm³/min - 5 drops/min